

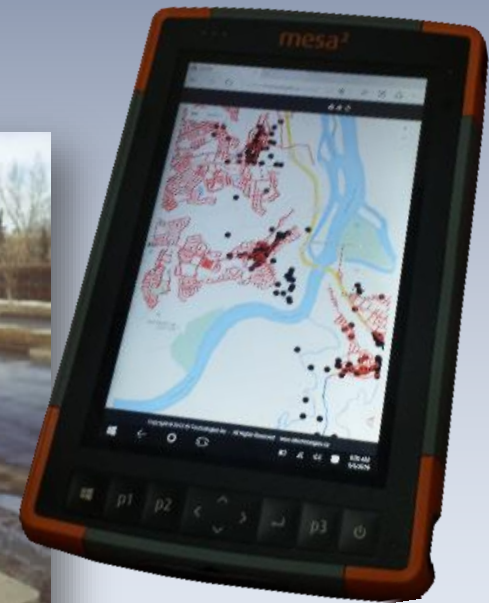
Integrated Utility Services Inc. (INTUS)



Enabling Utilities and Urban Communities to optimise operational performance via Digital Asset Management Systems & GIS based tools

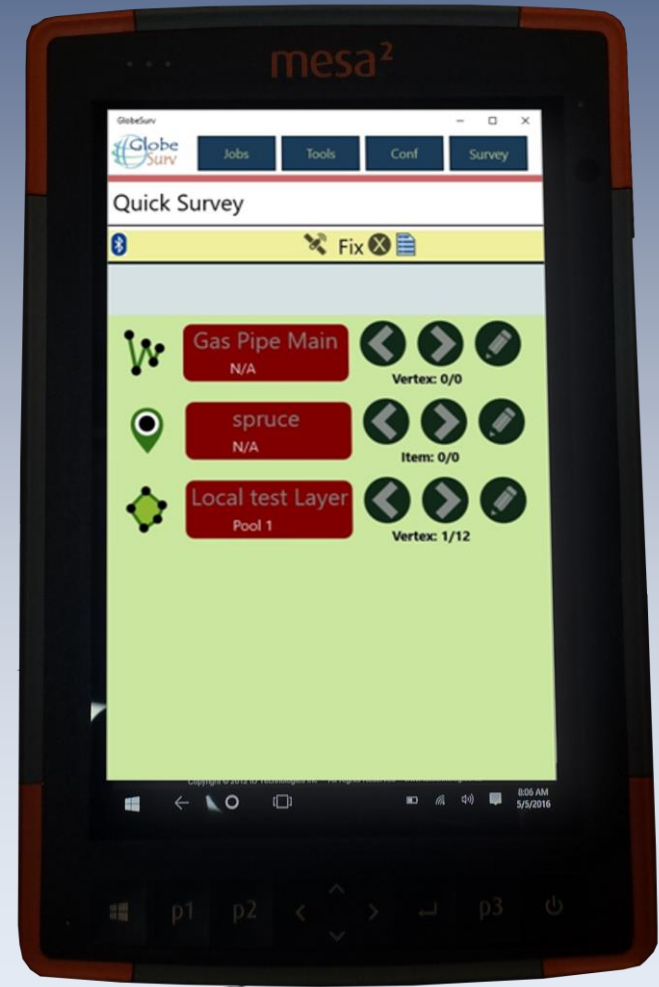
GlobeSurv

- Field Asset Management and data input
- High Precision cm level GPS mapping
- RTK system integration
- Real time pictures association
- Direct GIS integration (ESDN)
- KML or CSV export
- Integration with Total Stations



Mapping with GlobeSurv

- Provision for cloud based correction services
- Simultaneous mapping on multiple layers through quick survey
- Export in different coordinate system
- Attachment of pictures, documents and filed notes to any asset
- GPS satellite positioning and diagnostics
- Tolerance and Mask settings

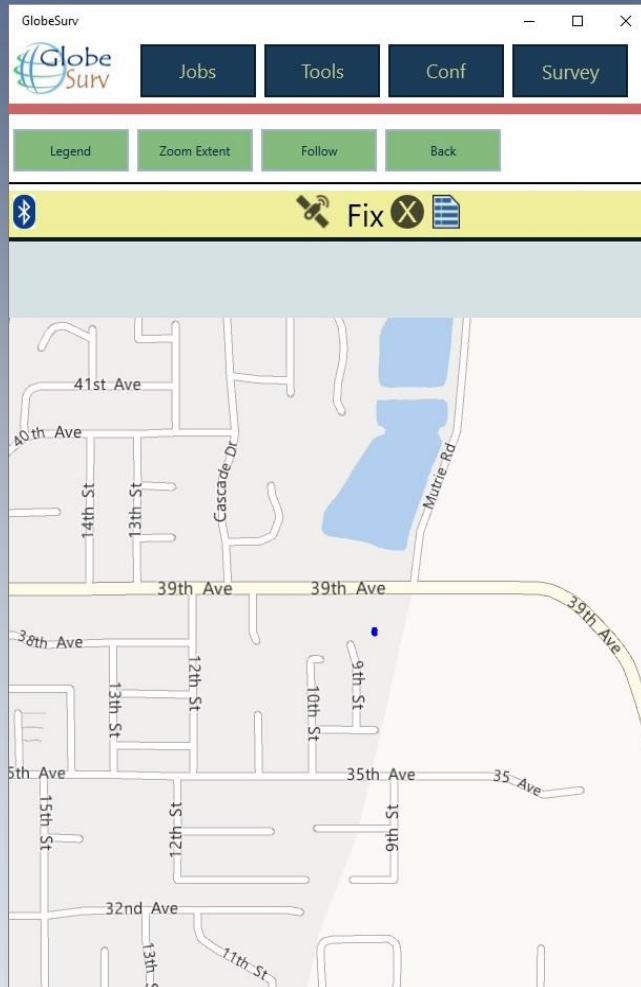


Specifications

- GPS, GLONASS and BeiDou L1 and L2 RTK with carrier phase
- GPS sensitivity -142 dBm
- SBAS tracking 3-channel, parallel tracking
- Update rate 1 Hz standard, 10 Hz and 20 Hz available
- Horizontal accuracy
 - RTK 10 mm
 - SBAS (WAAS) 0.3 m
 - Autonomous, no SA 1.2 m
- Fix
 - Cold start time < 60 s typical (no almanac or RTC)
 - Warm start time < 30 s typical (almanac and RTC)
 - Hot start time < 10 s (almanac, RTC, and position)
- Maximum speed 1,850 km/h (999 kts)
- Maximum altitude 18,288 m (60,000 ft)
- Differential options SBAS, Autonomous, External RTCM v2.3, RTK v3
- Operating temperature -40°C to +85°C
- Storage temperature -40°C to +85°C
- Humidity 95% non-condensing
- Antenna SMA, N type



GlobeSurv Interface



GlobeSurv Interface

GlobeSurv

Jobs Tools Conf Survey

Jobs

List New Save As Close I/O

Name: IDT Sample.kml

Description:

Date: 10/26/2016 6:00:00 AM

Layers

Add New Layer Delete Layer

	Gas Pipe Main	0	
	spruce	0	
	Local test Layer	1	

GlobeSurv

Jobs Tools Conf Survey

Configuration

Total Station

Base

Rover

GPS Utilities

Localization

Check Level

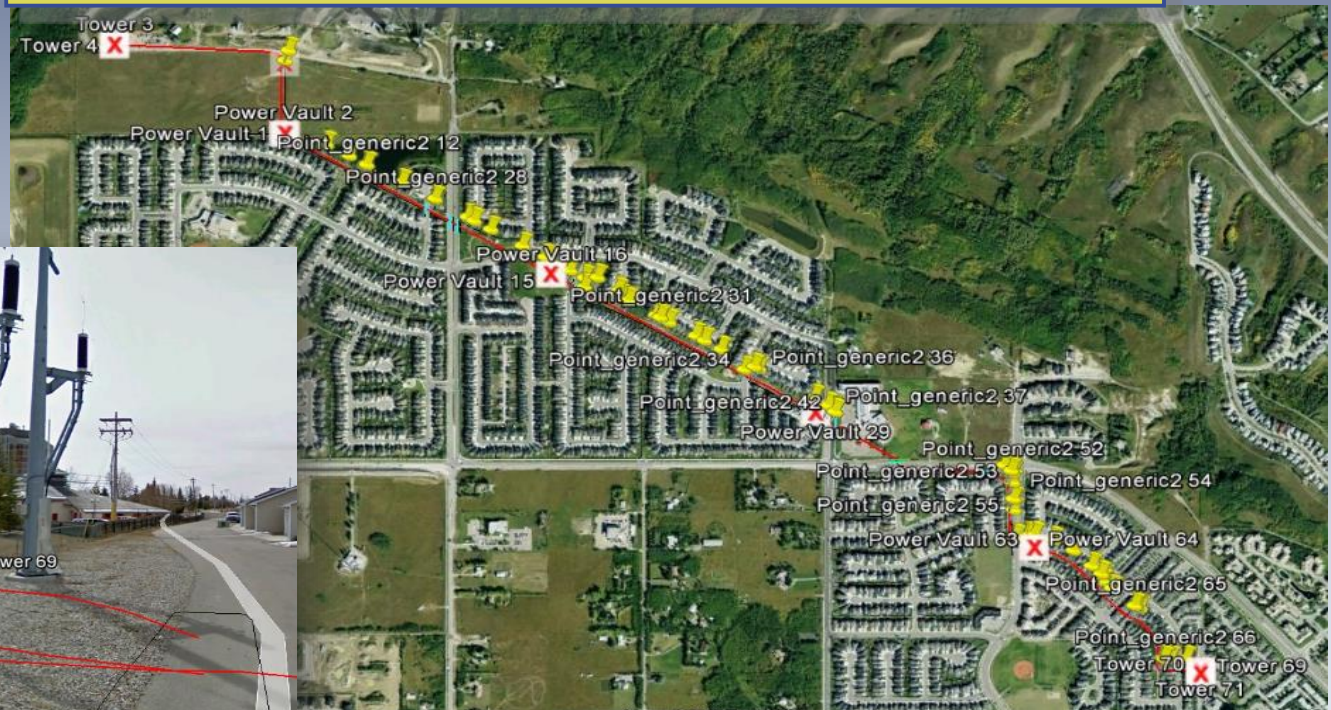
Tolereances

Preferences

Reference Points

GlobeSurv Data on GIS

Mapping of High Voltage Buried Transmission Line, Alberta, Canada



ID Technologies

ID Technologies has offices in Canada and Pakistan, with associations through a network of universities (University of Calgary, Georgia Tech., University of Engineering and Technology in Pakistan)

Focus Areas :

- Geo-location Business Management Solutions
- Geographic Information Systems (GIS) & applications
- Location-based services
- Telemetry / SCADA
- Precision GPS / mapping systems
- Wireless Business Management

All of ID Technologies' applied research solutions are driven by INTUS's business needs and its client's requests, and validated throughout full-scale operations.

